

# Supasoft Apparel



We make the basics Superior



# WELCOME TO SUPASOFT APPAREL

## We make the basics Superior

We are thrilled to introduce a new era of basics, redefining the way you experience comfort and fashion. With an unwavering focus on quality, craftsmanship, and a touch of modern aesthetics, we invite you to discover a world where everyday wear is transformed into an expression of effortless elegance. Discover a world of comfort and style with Supasoft, where every item is designed to enhance your everyday moments.



At Supasoft Apparel, we blend style with purpose. Many of our essentials are crafted from recycled materials, reflecting our commitment to sustainability. With each purchase, you contribute to our donations for impactful causes. Join us in shaping a more eco-friendly and compassionate world through fashion that makes a difference.



1.

### What sets us apart?

Our garments aren't just clothing – they're engineered for DTG (Direct-to-Garment) printing perfection. This means your designs will come to life with exceptional clarity and vibrancy. Experience the synergy of comfort, fashion, and cutting-edge printing technology with every piece from Supasoft.



## Engineered for DTG



## Better Cotton Initiative



## 100% Cotton Face



## Softer finish



## Environmentally conscious



## Faster production times



## Recycled collection



## Enhanced moisture absorption











# TABLE OF CONTENTS

## 05 SUSTAINABILITY

## 07 JERSEY COLLECTION

- 9. JERSEY T-SHIRT PREMIUM  
-CVC JERSEY T-SHIRT PREMIUM
- 11. VINTAGE TEE
- 13. HEAVYWEIGHT T-SHIRT
- 15. LONG SLEEVE T-SHIRT PREMIUM
- 17. YOUTH T-SHIRT PREMIUM
- 19. YOUTH LONG SLEEVE T-SHIRT  
PREMIUM

## 21 FLEECE COLLECTION

- 23. PULLOVER HOODIE PREMIUM
- 25. CREWNECK SWEATSHIRT PREMIUM
- 27. 100% RECYCLED HOODIE PLANET  
FRIENDLY
- 29. VINTAGE HOODIE

## 31 FLANNEL PANTS COLLECTION

- 33. MEN'S FLANNEL PANTS
- 34. WOMEN'S FLANNEL PANTS
- 35. KIDS' FLANNEL PANTS

## 37 TOWELS COLLECTION

- 39. VENUS WAFFLE PESHTEMAL
- 41. REVERIE PESHTEMAL
- 43. CARNIVAL PESHTEMAL
- 45. HERITAGE PESHTEMAL
- 47. COSMOS PESHTEMAL
- 48. GRAPHIC PESHTEMAL

## 51 SIZE SPECIFICATION SHEET

## 53 COLOR REFERENCE SHEET

## 55 CUSTOM MANUFACTURING

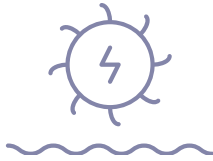
## 57 SOCIAL RESPONSIBILITY



# SUSTAINABILITY

## Doing good

At Supasoft Apparel, we're not just about fashion; we're about fashioning a sustainable future.



That's why our products are manufactured in an energy-efficient facility that utilizes LED lights, reducing both electricity usage and our carbon footprint.



Crafted with environmental responsibility in mind, our products are meticulously manufactured within a facility powered by energy-efficient gas engines. This innovative approach not only minimizes natural gas consumption but also significantly reduces greenhouse gas emissions, reinforcing our commitment to sustainable practices.

5.







At the core of our production values, our products are meticulously crafted within a facility that prioritizes water conservation. By employing dyeing techniques that demand less water, integrating water-efficient machinery, and advocating for water recycling, we're dedicated to minimizing our environmental footprint.





# JERSEY COLLECTION



**Crafted to seamlessly accommodate Direct To Garment (DTG) printing, these jerseys empower you to explore limitless customization options, making your individual creativity effortlessly come to life. Carefully curated through the use of premium soft materials that redefine comfort and style.**





**SU7000 - JERSEY  
T-SHIRT PREMIUM**  
CVC COLORS COMING SOON



**SU7002 - VINTAGE TEE**  
COMING SOON



**SU7004 - HEAVYWEIGHT  
T-SHIRT**



**SU7006 - LONG SLEEVE  
T-SHIRT PREMIUM**



**SU7000Y - YOUTH  
T-SHIRT PREMIUM**



**SU7006Y - YOUTH LONG  
SLEEVE T-SHIRT PREMIUM**



**Fabrication:** 30 singles ringspun jersey

**Weight:** 4.3 oz (145gsm)

**Sizes:** S-3XL

**Construction:** 95/5 1x1 ribbed collar. Side seamed. 1.0" Double needle sleeves and bottom hems. Tear-away booklet neck label. Self fabric shoulder to shoulder neck tape.

**Contents:**

Solids - 100% cotton.  
Athletic Heather - 90% cotton 10% viscose.  
Heather Mauve and Dark Grey Heather - 60% cotton 40% polyester



**ENGINEERED FOR DTG**



**THE MOST EFFICIENT ABSORBENCY**



**GUARANTEED SHRINKAGE BELOW 5%**



**SUPARIOR AND SOFT**



**100% COTTON FACE TIGHT KNIT**



# JERSEY T-SHIRT PREMIUM

## SU'7000



MUSTARD



NAVY



DARK GREY  
HEATHER



HEATHER  
MAUVE



ATHLETIC  
HEATHER



BLACK



IRISH  
GREEN



RED



PINK



WHITE



ROYAL



SAND

## SU'7000CVC

COMING SOON



BLACK  
HEATHER



HEATHER  
NAVY



HEATHER  
OLIVE



HEATHER  
PEACH



HEATHER MINT



LAVENDER  
BLUE



**Contents:**

100% ring-spun jersey cotton.

**Weight:** 5.3 oz (180gsm)

**Sizes:** S-3XL

VINTAGE  
OLIVE

VINTAGE  
MUSTARD

VINTAGE  
INDIGO



ENGINEERED  
FOR DTG



THE MOST  
EFFICIENT  
ABSORBENCY



GUARANTEED  
SHRINKAGE  
BELOW 5%



SUPARIOR  
AND SOFT



100% COTTON  
FACE  
TIGHT KNIT



# VINTAGE TEE

SU7002 - COMING SOON



VINTAGÉ  
OATMEAL



VINTAGE  
GREY



VINTAGE  
BLACK



**Fabrication:** 20 singles ringspun jersey

**Weight:** 6.5 oz (220gsm)

**Sizes:** S-3XL

**Construction:** 95/5 1x1 ribbed collar. Side seamed. 1.0" Double needle sleeves and bottom hems. Single needle edge stitch at the collar. Tear-away booklet neck label. Self fabric shoulder to shoulder neck tape.

**Contents:**

Solids - 100% cotton.  
Athletic Heather - 85% cotton 15% viscose



**ENGINEERED FOR DTG**



**THE MOST EFFICIENT ABSORBENCY**



**GUARANTEED SHRINKAGE BELOW 5%**



**SUPARIOR AND SOFT**



**100% COTTON FACE TIGHT KNIT**



# HEAVYWEIGHT T-SHIRT

## SU7004



WHITE



GREY



BLACK



BROWN



OLIVE



SAND





**Fabrication:** 30 singles ringspun jersey

**Weight:** 4.3 oz (145gsm)

**Sizes:** S-3XL

**Construction:** 95/5 1x1 ribbed collar and cuffs. Side seamed. 1.0" Double needle sleeves and bottom hems. Tear-away booklet neck label. Self fabric shoulder to shoulder neck tape.

**Contents:**

Solids - 100% cotton.

Athletic Heather - 90% cotton, 10% viscose.

Dark Grey Heather - 60% cotton, 40% polyester



**ENGINEERED FOR DTG**



**THE MOST EFFICIENT ABSORBENCY**



**GUARANTEED SHRINKAGE BELOW 5%**



**SUPARIOR AND SOFT**



**100% COTTON FACE TIGHT KNIT**



# LONG SLEEVE T-SHIRT PREMIUM SU7006



RED



DARK GREY  
HEATHER



WHITE



BLACK



ATHLETIC  
HEATHER



NAVY



**Fabrication:** 30 singles ringspun jersey

**Weight:** 4.3 oz (145gsm)

**Sizes:** S (6-8), M (10-12), L (14-16), XL (16-18)

**Construction:** 95/5 1x1 ribbed collar. Side seamed. 1.0" Double needle bottom hems. Tear-away booklet neck label. Self fabric shoulder to shoulder neck tape.

**Contents:**  
Solids- 100% cotton.  
Athletic Heather- 90% cotton  
10% viscose.



**ENGINEERED FOR DTG**



**THE MOST EFFICIENT ABSORBENCY**



**GUARANTEED SHRINKAGE BELOW 5%**



**SUPARIOR AND SOFT**



**100% COTTON FACE TIGHT KNIT**



# YOUTH T-SHIRT PREMIUM

## SU7000Y



ATHLETIC  
HEATHER



PINK



BLACK



NAVY



WHITE



ROYAL



RED



**Fabrication:** 30 singles ringspun jersey

**Weight:** 4.3 oz (145gsm)

**Sizes:** S (6-8), M (10-12), L (14-16), XL (16-18)

**Construction:** 95/5 1x1 ribbed collar and cuffs. Side seamed. 1.0" Double needle bottom hems. Tear-away booklet neck label. Self fabric shoulder to shoulder neck tape.

**Contents:**

Solids - 100% cotton.  
Athletic Heather - 90% cotton, 10% viscose.



**ENGINEERED FOR DTG**



**THE MOST EFFICIENT ABSORBENCY**



**GUARANTEED SHRINKAGE BELOW 5%**



**SUPARIOR AND SOFT**



**100% COTTON FACE TIGHT KNIT**



# YOUTH LONG SLEEVE T-SHIRT PREMIUM

SU7006Y



WHITE



BLACK



ATHLETIC  
HEATHER





# FLEECE COLLECTION



Unbeatable softness meets sustainability. Made with premium recycled materials to create cozy essentials, ensuring a soft touch on your skin and a gentle touch on the planet without compromising your print quality.





**SU7500 - PULLOVER  
HOODIE PREMIUM**



**SU7600 - CREWNECK  
SWEATSHIRT PREMIUM**



**SU7800 - RECYCLED  
HOODIE - PLANET  
FRIENDLY**



**SU7700 - VINTAGE  
HOODIE  
COMING SOON**



**Fabrication:** 3-End fleece

**Weight:** 8.25 oz (280gsm)

**Sizes:** S-3XL

**Construction:** 100% cotton face. 30 singles.. 95/5 1x1 ribbed collar, cuffs & waistband. Double needle top stitched on all seams. Tear-away booklet neck label. Kangaroo pouch pocket. Self fabric moon patch on neck for custom branding. 3 panel fleece lined hood. Round dyed to match drawcord with tipped ends. Silver grommets. Twill neck tape-dyed to match.

**Contents:**

Solids - 65% cotton, 25% polyester & 10% recycled polyester.

Athletic Heather and Dark Grey Heather - 55% cotton 35% polyester & 10% recycled polyester.



CONTAINS  
RECYCLED  
POLYESTER



DOING  
GOOD.  
PRODUCED  
USING LESS  
WATER



ENGINEERED  
FOR DTG



THE MOST  
EFFICIENT  
ABSORBENCY



GUARANTEED  
SHRINKAGE  
BELOW 5%



SUPARIOR  
AND SOFT



100% COTTON  
FACE  
TIGHT KNIT



# PULLOVER HOODIE PREMIUM SU7500



MUSTARD



ROYAL



DARK GREY  
HEATHER



BLACK



ATHLETIC  
HEATHER



SAND



NAVY



WHITE



LIGHT  
PINK



FOREST



RED  
COMING SOON



MILITARY  
GREEN  
COMING SOON



**Fabrication:** 3-End fleece

**Weight:** 8.25 oz (280gsm)

**Sizes:** S-3XL

**Construction:** 100% cotton face. 30 singles. 95/5 1x1 ribbed collar, cuffs & waistband. Double needle top stitched on all seams. Tear-away booklet neck label. Self fabric moon patch on neck for custom branding. Twill neck tape-dyed to match.

**Contents:**

Solids - 65% cotton, 25% polyester, 10% recycled polyester.

Athletic Heather - 55% cotton, 35% polyester & 10% recycled polyester.



CONTAINS  
RECYCLED  
POLYESTER

DOING  
GOOD.  
PRODUCED  
USING LESS  
WATER



ENGINEERED  
FOR DTG



THE MOST  
EFFICIENT  
ABSORBENCY



GUARANTEED  
SHRINKAGE  
BELOW 5%



SUPARIOR  
AND SOFT



100% COTTON  
FACE  
TIGHT KNIT



# CREWNECK SWEATSHIRT PREMIUM SU'7600



MUSTARD



NAVY



FOREST



IRISH GREEN



ATHLETIC  
HEATHER



BLACK



WHITE



RED



LIGHT  
PINK



SAND



ROYAL  
COMING SOON



MILITARY  
GREEN  
COMING SOON



**Fabrication:** 2-End fleece

**Weight:** 8 oz (270 gsm)

**Sizes:** S-3XL

**Construction:** 55/45

cotton/poly blend face. 20 singles. 95/5 1x1 ribbed collar, cuffs & waistband. Double needle top stitched on all seams. Tear-away booklet neck label. Kangaroo pouch pocket. Self fabric moon patch on neck for custom branding. 2 panel fleece lined hood. Round dyed to match drawcord with tipped ends. Silver grommets. Twill neck tape-dyed to match.

**Contents:**

55% regenerated cotton &  
45% recycled polyester



100%  
REGENERATED  
YARN

DOING GOOD.  
PRODUCED  
USING LESS  
WATER



ENGINEERED  
FOR DTG



THE MOST  
EFFICIENT  
ABSORBENCY



GUARANTEED  
SHRINKAGE  
BELOW 5%



SUPARIOR  
AND SOFT



# RECYCLED HOODIE- PLANET FRIENDLY

SU'7800



BLACK



NAVY



DARK GREY  
HEATHER



ATHLETIC  
HEATHER



**Contents:**

65% cotton, 25% polyester, 10% recycled polyester.

**Weight:** 8.25 oz (280gsm)

**Sizes:** S-3XL

VINTAGE  
OLIVE

VINTAGE  
MUSTARD

VINTAGE  
INDIGO



ENGINEERED  
FOR DTG



THE MOST  
EFFICIENT  
ABSORBENCY



GUARANTEED  
SHRINKAGE  
BELOW 5%



SUPARIOR  
AND SOFT



100% COTTON  
FACE  
TIGHT KNIT



# VINTAGE HOODIE

SU'7700 - COMING SOON



VINTAGÉ  
OATMEAL



VINTAGE  
GREY



VINTAGE  
BLACK



# FLANNEL PANTS COLLECTION



Unite in comfort: Supasoft's family flannel pants. Cherish cozy moments in meticulously designed, soft pants. Celebrate togetherness with style and warmth.





**SU6300M - MEN'S  
FLANNEL PANTS**

**SU6300W - WOMEN'S  
FLANNEL PANTS**

**SU6300Y - YOUTH  
FLANNEL PANTS**



# MEN'S FLANNEL PANTS

## SU6300M

**Fabrication:** 100% Cotton All Over Print (AOP), brushed

**Weight:** 5.3 oz (180gsm)

**Sizes:** S-2XL

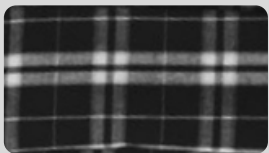
**Construction:** 20x10/46x40. Open bottom pants. Tear-away label. Self fabric covered elastic waistband. Black flat drawcord. Side seam pockets.



Red plaid



Green plaid



Black plaid  
COMING SOON



**SUPARIOR  
AND SOFT**



**100% COTTON  
FACE  
TIGHT KNIT**



# WOMEN'S FLANNEL PANTS

## SU6300W

**Fabrication:** 100% Cotton All Over Print (AOP), brushed

**Weight:** 5.3 oz (180gsm)

**Sizes:** S-XL

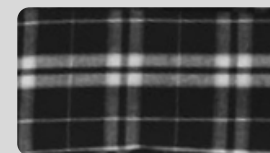
**Construction:** 20x10/46x40. Open bottom pants. Tear-away label. Self fabric covered elastic waistband. Black flat drawcord. Side seam pockets.



Red plaid



Green plaid



Black plaid  
COMING SOON



**SUPARIOR  
AND SOFT**



**100% COTTON  
FACE  
TIGHT KNIT**

# YOUTH FLANNEL PANTS

## SU6300Y

**Fabrication:** 100% Cotton All Over Print (AOP), brushed

**Weight:** 5.3 oz (180gsm)

**Sizes:** S (6-8), M (10-12), L (14-16), XL (16-18)

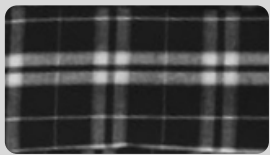
**Construction:** 20x10/46x40. Open bottom pants. Tear-away label. Self fabric covered elastic waistband. Black flat drawcord. Side seam pockets.



Red plaid



Green plaid



Black plaid  
COMING SOON



**SUPARIOR  
AND SOFT**



**100% COTTON  
FACE  
TIGHT KNIT**



**Disclaimer:** The garment is not flame resistant. It should fit snugly for safety. Loose-fitting garment is more likely to catch fire.







# TOWELS COLLECTION



Dive into the unmatched softness and absorbency of our peshtemal collection. Crafted using 100% Turkish cotton, each towel encapsulates an exquisite fusion of top-tier quality, and elegant design. Wrap yourself in comfort.

#sandfree





**SU3001 - VENUS WAFFLE  
PESHTEMAL**



**SU3002 - REVERIE  
PESHTEMAL**



**SU3003 - CARNIVAL  
PESHTEMAL**



**SU3004 - HERITAGE  
PESHTEMAL**



**SU3005 - COSMOS  
PESHTEMAL**



**Fabrication:** 100% Turkish Cotton

**Weight:** 420gr (290 gsm)

**Size:** 33" x 67" (85cm x 170cm)

**Construction:** Woven on the automatic loom. Stonewashed to achieve vintage look.



**100% TURKISH COTTON**



**100% RECYCLED WOVEN & TAFFETA LABEL**



**WRAPPED IN 100% RECYCLED CRAFT PAPER**

**A PORTION OF PROFITS SUPPORTS NATURE CONSERVANCY**



# VENUS WAFFLE PESHTEMAL

SU3001



BROWNISH TILE



MINT



YELLOW



PETROL



POWDER



OLIVE





**Fabrication:** 100% Turkish Cotton

**Weight:** 400gr (260 gsm)

**Size:** 35" x 67" (90cm x 170cm)

**Construction:** Woven on the automatic loom. Stonewashed to achieve vintage look.



**100% TURKISH COTTON**



**100% RECYCLED WOVEN & TAFFETA LABEL**



**WRAPPED IN 100% RECYCLED CRAFT PAPER**



**A PORTION OF PROFITS SUPPORTS NATURE CONSERVANCY**



# REVERIE PESHTEMAL

SU3002



MUSTARD



EGGSHELL BLUE



YELLOW



ANTRASIT



BROWN



TILE





**Fabrication:** 100% Turkish  
Cotton muslin

**Weight:** 330gr (170 gsm)

**Size:** 39" x 75" (100cm x  
190cm)

**Construction:** Woven  
on the automatic loom.  
Washed.



**100% TURKISH  
COTTON**



**100% RECYCLED  
WOVEN &  
TAFFETA LABEL**



**WRAPPED IN  
100% RECYCLED  
CRAFT PAPER**

**A PORTION OF PROFITS SUPPORTS  
NATURE CONSERVANCY**



# CARNIVAL PESHTEMAL

SU3003



BLUE



DENIM



YELLOW



LIGHT BLUE



LIGHT PINK



BURGUNDY





**Fabrication:** 100% Turkish Cotton

**Weight:** 280gr (170 gsm)

**Size:** 35" x 71" (90cm x 180cm)

**Construction:** Woven on the automatic loom. Washed.



**100% TURKISH COTTON**



**100% RECYCLED WOVEN & TAFFETA LABEL**



**WRAPPED IN 100% RECYCLED CRAFT PAPER**



**A PORTION OF PROFITS SUPPORTS NATURE CONSERVANCY**



# HERITAGE PESHTEMAL

SU3004



TURQUOISE



DENIM



LILAC



YELLOW



BURGUNDY



ORANGE





# COSMOS PESHTEMAL

## SU3005

**Fabrication:** 100% Turkish Cotton

**Weight:** 285gr (185 gsm)

**Size:** 35" x 67" (90cm x 170cm)

**Construction:** Woven on the automatic loom. Washed.

**Disclaimer:** Our tie-dye towels are individually handcrafted, resulting in unique patterns.



**100% TURKISH COTTON**



**100% RECYCLED WOVEN & TAFFETA LABEL**



**WRAPPED IN 100% RECYCLED CRAFT PAPER**



**A PORTION OF PROFITS SUPPORTS NATURE CONSERVANCY**



# GRAPHIC PESHTEMALS

SU3006



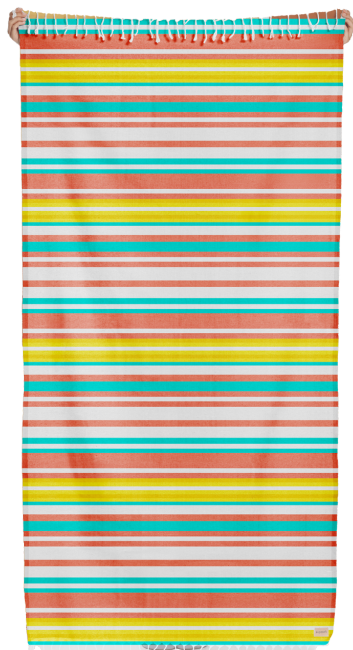
SU3006-SOUTHERN  
BREEZE PESHTEMAL



SU3006-SUNSET  
OASIS PESHTEMAL



SU3006-BRIGHTER  
DAYS PESHTEMAL



SU3006-LINEA  
PESHTEMAL



SU3006-PARADISE  
PESHTEMAL



SU3006-SUNSHINE  
MANDALA  
PESHTEMAL



# GRAPHIC PESHTEMALS

SU3006



SU3006-HAVEN  
PESHTEMAL



SU3006-DREAMAR  
PESHTEMAL



SU3006-BALANCE  
PESHTEMAL



SU3006-DIVE IN  
PESHTEMAL



SU3006-TURTLE COVE  
PESHTEMAL







# Supasoft Apparel

## Apparel

### SIZE SPECIFICATION SHEET

MEASUREMENTS ARE IN INCHES, BASED ON FLAT MEASUREMENTS

Style number		S	M	L	XL	2XL	3XL
<b>SU7000</b> JERSEY T-SHIRT PREMIUM	<b>CHEST</b> (1" BELOW ARM HOLE)	18	20	22	24	26	28
	<b>BODY LENGTH</b> (FROM HPS)	28	29	30	31	32	33
<b>SU7002</b> VINTAGE TEE	<b>CHEST</b> (1" BELOW ARM HOLE)	18 1/4	20 1/4	22	24	26	27 3/4
	<b>BODY LENGTH</b> (FROM HPS)	26 3/5	28	29 2/5	30 3/4	31 3/5	32 2/4
<b>SU7004</b> HEAVYWEIGHT T-SHIRT	<b>CHEST</b> (1" BELOW ARM HOLE)	18	20	22	24	26	28
	<b>BODY LENGTH</b> (FROM HPS)	29	30	31	32	33	34
<b>SU7006</b> LONG SLEEVE T-SHIRT PREMIUM	<b>CHEST</b> (1" BELOW ARM HOLE)	18	20	22	24	26	28
	<b>BODY LENGTH</b> (FROM HPS)	28	29	30	31	32	33
<b>SU7500</b> PULLOVER HOODIE PREMIUM	<b>CHEST</b> (1" BELOW ARM HOLE)	20	22	24	26	28	30
	<b>BODY LENGTH</b> (FROM HPS)	27	28	29	30	31	32
<b>SU7600</b> CREWNECK SWEATSHIRT PREMIUM	<b>CHEST</b> (1" BELOW ARM HOLE)	20	22	24	26	28	30
	<b>BODY LENGTH</b> (FROM HPS)	27	28	29	30	31	32
<b>SU7700</b> VINTAGE HOODIE	<b>CHEST</b> (1" BELOW ARM HOLE)	20	22	24	26	28	30
	<b>BODY LENGTH</b> (FROM HPS)	27	28	29	30	31	32
<b>SU7800</b> 100% RECYCLED HOODIE - PLANET FRIENDLY	<b>CHEST</b> (1" BELOW ARM HOLE)	20	22	24	26	28	30
	<b>BODY LENGTH</b> (FROM HPS)	27	28	29	30	31	32

Style number		S (6-8)	M (10-12)	L (12-14)	XL (16-18)	
<b>SU7000Y</b> YOUTH T-SHIRT PREMIUM	<b>CHEST</b> (1" BELOW ARM HOLE)	15 1/4	16 1/4	17 1/4	18 1/4	
	<b>BODY LENGTH</b> (FROM HPS)	20 7/8	22 1/8	23 3/8	24 3/8	
<b>SU7006Y</b> YOUTH LONG SLEEVE T- SHIRT PREMIUM	<b>CHEST</b> (1" BELOW ARM HOLE)	17	18	19	20	
	<b>BODY LENGTH</b> (FROM HPS)	22	23 1/2	25	26 1/2	



# Flannel pants

MEASUREMENTS ARE IN INCHES, BASED ON FLAT MEASUREMENTS

Style number		S	M	L	XL	2XL
<b>SU6300M</b> MEN'S FLANNEL PANTS	<b>INSEAM</b>	28 1/4	29	29 1/4	30	30 1/4
	<b>WAIST RELAXED</b>	14	15 1/4	17 1/2	19	20 3/4
<b>SU6300W</b> WOMEN'S FLANNEL PANTS	<b>INSEAM</b>	30 1/4	30 1/2	31	31 1/2	
	<b>WAIST RELAXED</b>	14	15 1/2	16 1/2	18 1/2	
Style number		S (6-8)	M (10-12)	L (12-14)	XL (16-18)	
<b>SU6300Y</b> YOUTH FLANNEL PANTS	<b>INSEAM</b>	21 3/4	23 1/2	25 1/2	27 1/2	
	<b>WAIST RELAXED</b>	11 1/4	11 1/2	12 1/4	12 1/2	

# Towels

MEASUREMENTS ARE IN INCHES, BASED ON FLAT MEASUREMENTS

Style number	WIDTH	LENGTH
<b>SU3001</b> VENUS WAFFLE PESHTEMAL	33	67
<b>SU3002</b> REVERIE PESHTEMAL	35	67
<b>SU3003</b> CARNIVAL PESHTEMAL	39	75
<b>SU3004</b> HERITAGE PESHTEMAL	35	71
<b>SU3005</b> COSMOS PESHTEMAL	35	67

\*ALL MEASUREMENTS ABOVE ARE SUBJECT TO CHANGE. PLEASE REACH OUT TO US FOR UPDATED INFORMATION.



# Supasoft Apparel

## COLOR REFERENCE SHEET

### Apparel

PREMIUM BLACK  
BLACK C



BLACK  
19-4008 TCX



DEEP BLACK  
19-4004 TCX



WHITE  
11-0601 TCX



PORCELAIN WHITE  
11-4001 TCX



ATHLETIC HEATHER  
COOL GREY 6 C



ATHLETIC HEATHER  
SILVER 10077 C



NAVY  
533 C



DEEP NAVY  
19-3922 TCX



DARK GREY HTHR 60/40  
7540 CP



DARK GREY HEATHER  
19-3912 TCX



RED  
199 C



RED PLAID  
19-1764 TCX



IRISH GREEN  
2252 C



GREEN PLAID  
18-6024 TCX



LIGHT PINK  
P 72-9 C



PINK  
706 C



SAND  
7528 C



TRUE ROYAL  
7684 CP



HEATHER MAUVE  
7524U



MUSTARD  
15-0948 TCX



FOREST  
5535 C



GREY  
5295 UP



BROWN  
19-0809 TCX



OLIVE  
19-0309 TCX



SAND  
16-1213 TCX



BLACK HEATHER  
BLACK 7 CP



HEATHER NAVY  
2379 C



HEATHER OLIVE  
7497 CP



HEATHER PEACH  
2016 UP



HEATHER MINT  
2246 C



LAVENDER BLUE  
7667 CP



MILITARY GREEN  
417 C





# Vintage Apparel

VINTAGE INDIGO  
18-3910 TCX



VINTAGE MUSTARD  
16-1142 TCX



VINTAGE OLIVE  
18-0312 TCX



VINTAGE BLACK  
19-4205 TCX



VINTAGE GREY  
17-1503 TCX



VINTAGE OATMEAL  
16-1104 TCX



# Towels

MINT



POWDER



YELLOW



OLIVE



PETROL



BROWNISH TILE



MUSTARD



EGGSHELL BLUE



YELLOW



ANTRANSIT



BROWN



TILE



BLUE



DENIM



YELLOW



LIGHT BLUE



LIGHT PINK



BURGUNDY



TURQUOISE



DENIM



LILAC



YELLOW



BURGUNDY



ORANGE



\*OUR TOWEL COLLECTIONS UNDERGO HAND DYEING, PREVENTING US FROM PROVIDING SPECIFIC COLOR CODES.

# CUSTOM MANUFACTURING

## TURN YOUR IDEAS INTO REALITY

---

At Supasoft Apparel, we understand that creating your own concept is the key to making your products truly yours. That's why we're thrilled to offer our customers the opportunity for custom manufacturing.

---

Throughout the custom manufacturing process, we will guide you in:

**Tailored Perfection:** Crafted to order

**Unparalleled Quality:** Supasoft's high standards

**Endless Possibilities:** Your unique ideas

**Seamless Process:** Guided creation



55.

## HOW WE CAN ASSIST YOU:

- Fabric Sourcing
- Tailored Trims and Color Options
- Private Labeling
- Private Boxing and Packaging Solutions





## PRODUCTION TIME:

At Supasoft Apparel, we offer competitive processing times, and our team will collaborate with you to accommodate your delivery requirements. Keep in mind that lead times might vary based on the product design and the quantity you need.

## MINIMUMS:

The minimum order requirements depend on the specific style and materials you choose.



## PRICE:

In our commitment to continuously support your business expansion, we've streamlined our production process to ensure affordability, consistency, and top-notch quality.

# SOCIAL RESPONSIBILITY

At Supasoft Apparel, social responsibility is woven into the fabric of our values. We recognize the profound impact of our actions on society, the environment, and our stakeholders. Guided by an unwavering commitment to ethical and sustainable practices, we strive to make a positive difference in every step of our journey. From sourcing materials to manufacturing processes, we prioritize transparency, fair labor practices, and environmental consciousness. Our dedication to social responsibility reflects our deep-rooted belief in creating a better, more equitable world for all.

Supasoft Apparel Jersey collections are crafted using yarns certified by the Better Cotton Initiative (BCI), ensuring a commitment to more sustainable production.



Our unwavering commitment extends to achieving WRAP Certification. This certification reflects our dedication to upholding high standards in social compliance, ethical manufacturing practices, and the well-being of our workforce. By aligning with the principles set forth by the Worldwide Responsible Accredited Production (WRAP), we ensure that our operations not only meet but exceed expectations in terms of responsible and sustainable production. With this commitment, we aim to contribute positively to the industry, society, and the environment as a whole.



Supasoft Apparel holds a steadfast commitment to adhering to the OEKO-TEX® Standard 100. This commitment underscores our dedication to producing textiles that meet the highest levels of safety and sustainability standards. By complying with the stringent criteria set by OEKO-TEX®, we ensure that our products are free from harmful substances and chemicals, ultimately promoting the well-being of our customers, the environment, and the broader community. Our pledge to OEKO-TEX® reflects our relentless pursuit of excellence and our dedication to fostering a healthier, more responsible textile industry.





# Supasoft Apparel





# We make the basics Superior

## CORPORATE OFFICE/SALES/ WAREHOUSE

16898 S Main St, Gardena,  
CA 90248

+1 424 292 3512

support@supasoftapparel.com



@supasoftapparel



Supasoft Apparel



[www.supasoftapparel.com](http://www.supasoftapparel.com)



View our e-catalog



Member of:

